

Multinail EcoWeb®



Available in left and right profiles, EcoWeb® are strong, reliable connectors for manufacturing parallel chord floor joists.

Benefits of EcoWeb®

These pre-punched and formed galvanised steel timber connectors are:

- An economical way of achieving a strong and rigid structural floor platform
- Offers streamlined and efficient manufacturing processes, enabling quick production with minimal complexity
- Capacities to withstand high loads
- Open web design simplifies installation of services
- Available in both left hand and right hand profiles
- Made in Australia

Maximum clearance between webs

EcoJoists® are designed to allow the easy accommodation of electrical, plumbing, waste water and air conditioning services with no cutting on site.

Maximum clearance between the webs is as shown in Table 1.

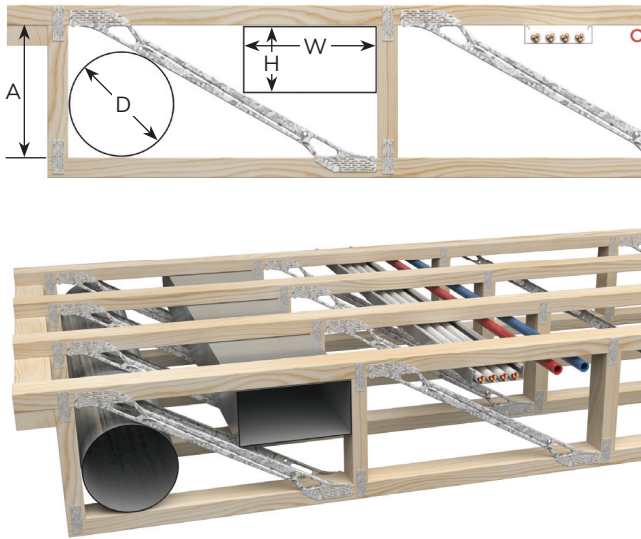


Figure 1

Table 1: Clearance for Service Penetrations

	ECJ300	ECJ360	ECJ400
A (mm)	230	290	343
D (mm)	194	230	621
H (mm)	W (mm)		
50	430	470	490
100	330	380	410
150	210	290	330
200	110	200	250
250	N/A	110	180
300	N/A	N/A	110

Notes:

1. Timber chords of the EcoJoist® must not be cut, notched or drilled in any way without engineering approval.
2. EcoWeb® metal webs of the EcoJoist® must not be drilled, bent or removed in any way without engineering approval.

Indicative Span Table - EcoJoist®

Table 2: Maximum spans for Residential Floor Live Loads (1.5kPa/1.8kN)

Maximum Span (mm) - 1.5kPa/1.8kN				
EcoJoist® size	Overall depth (mm)	Timber size (MGP10)	450 centres	600 centres
ECJ300-35	300	35 x 90	5500	5100
ECJ360-35	360	35 x 90	6300	5400
ECJ400-35	413	35 x 90	6600	5700

Table 3: Maximum spans for Commercial Floor Live Loads (3.0kPa/2.7kN)

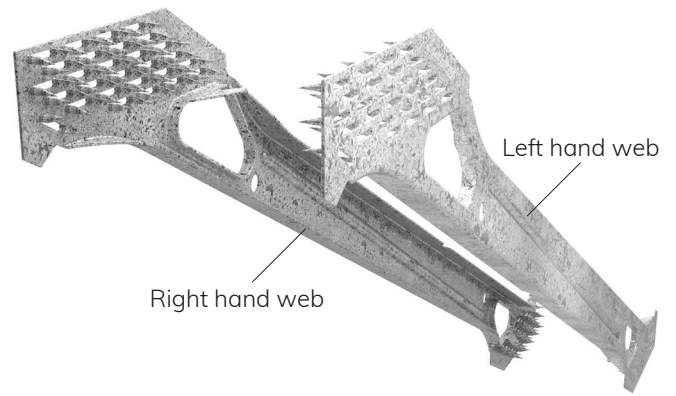
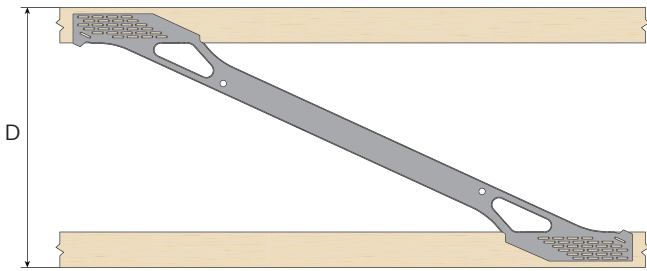
Maximum Span (mm) - 3.0kPa/2.7kN				
EcoJoist® nominal size	Overall depth (mm)	Timber size (MGP12)	450 centres	600 centres
ECJ300-35	300	35 x 90	3200	3000
ECJ360-35	360	35 x 90	4100	3300
ECJ400-35	413	35 x 90	4400	3400

Note:

Spans and depths can vary depending on the size and grade of the timber chords selected. As the live loads increase over 3kPa need the thickness and grade of timber flooring panels will also increase.

Technical Specifications

Steel G300 Steel, Z275, 1mm Thickness



Description and Packing

Product Code	Description D	Carton Qty	Pallet Qty	Carton kg.
ECW30035-S	300mm - Sleeve of 250LH & 250RH	250	pairs	157.0
ECW30035-P1	300mm - Sleeves of 1000LH & 1000RH	1000	pairs	628.0
ECW30035-P8	300mm - Sleeves of 8000LH & 8000RH	8000	pairs	5024.0
ECW36035-S	360mm - Sleeve of 250LH & 250RH	250	pairs	164.0
ECW36035-P1	360mm - Sleeves of 1000LH & 1000RH	1000	pairs	656.0
ECW36035-P8	360mm - Sleeves of 8000LH & 8000RH	8000	pairs	5248.0
ECW40035-S	413mm - Sleeve of 250LH & 250RH	250	pairs	169.0
ECW40035-P1	413mm - Sleeves of 1000LH & 1000RH	1000	pairs	676.0
ECW40035-P8	413mm - Sleeves of 8000LH & 8000RH	8000	pairs	5408.0



Personalised. Local. Progressive.

Multinail Australia Pty. Ltd.

155 Burnside Road, Stapylton

QLD 4207, Australia

Phone: +61 (0)7 3297 3250

Email: enquiry@multinail.com

www.multinail.com.au