

## Top Hat Bracket (NT only)



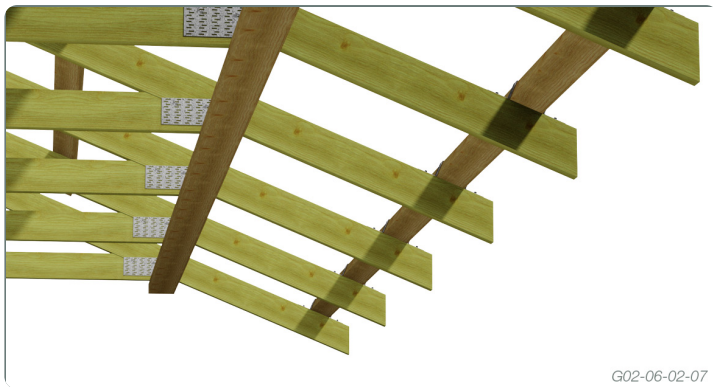
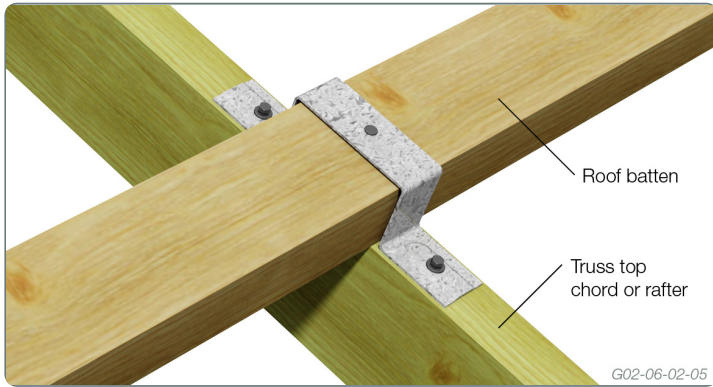
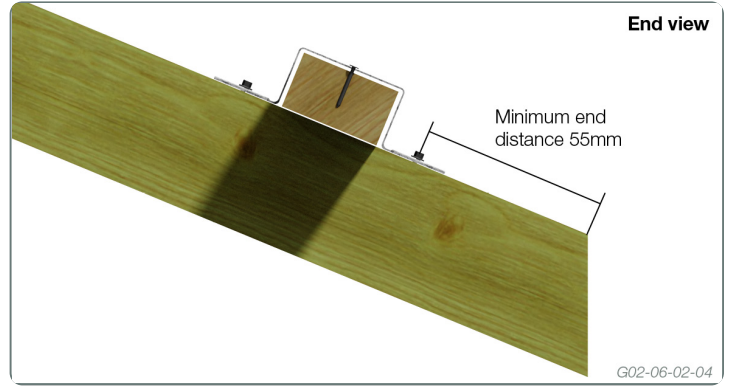
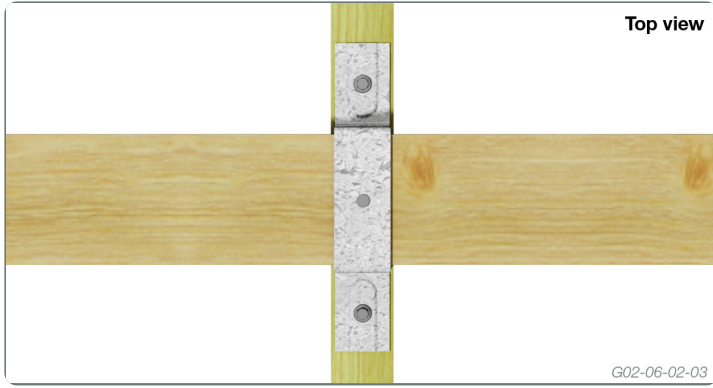
**Ideal for tying down roof battens to rafters or truss top chords**

**Pre-punched and formed galvanised steel timber connectors ideal for:**

**Tying down 70mm x 45mm roof battens to rafters or truss top chords in high winds areas.**

**For Northern Territory use only.**

## APPLICATION



- Capacity from Low High Low cyclone testing as specified in the BCA for inclusion in the northern territory deemed to comply manual (DTCM)
- Fully tested by James Cook University Cyclone Testing Station under Low High Low cyclone testing regime and referenced in the NT Deemed to Comply Manual.

Screw Size Number	Strength limit state design load (kN)
Timber Joint Group	J2/JD3
12	4.2

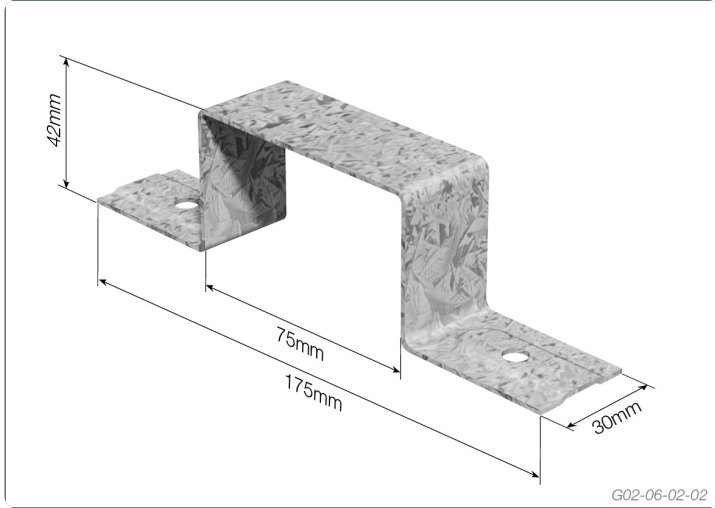
### Fixing procedure:

1. Fix each side of bracket with one Type 17 screw as noted above.
  2. Screws are Buildex Type 17, 50mm long galvanised batten screws.
- Minimum end distance for: No.12 gauge screws 55mm.
  - Screw holes to be prebored.
  - Fix 1/30mm x 2.8Ø nail in top.

DESCRIPTION AND PACKAGING

Manufactured from 1.5mm Galvanised G300 Z275 Steel

Description	Product Code	Reference Code	Carton quantity	Carton kg.
175x30mm	TA0423	THB70-100	100	9.0
30mm x 2.8Ø Multinail Nails (TA302)				



Due to continual product improvement Multinail Australia Pty Ltd. reserves the right to change the product/s depicted - both in description and specification. This document has to be read in conjunction with Multinail's Technical Manual.