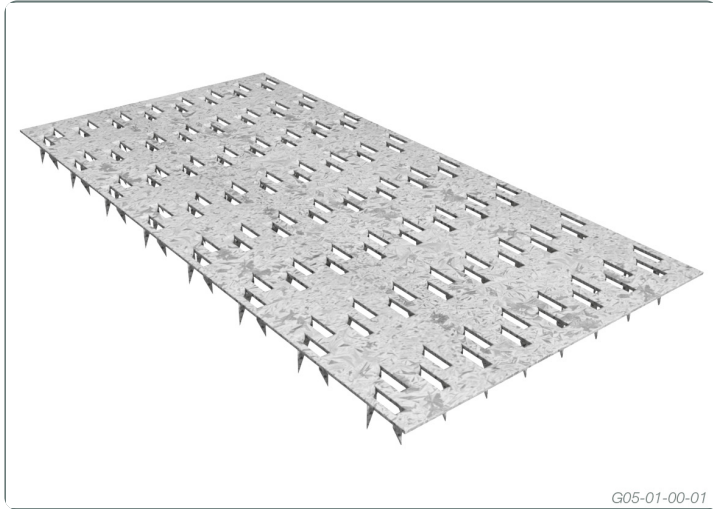


## MN Truss Plate



Formed galvanised steel connector designed to provide an effective means of fastening two timber members together under high loads

**These formed galvanised steel connectors:**  
Incorporate preformed teeth making it quick and easy to press into timber.  
Teeth are spaced accordingly to eliminate timber splitting.  
Twisted tooth provide reduces tooth withdrawal.

### NAILPLATES

Multinail nailplates incorporate many refinements, particularly in the tooth profile and size, that is designed to grip the timber more securely. The bending and twisting of teeth during manufacture was carefully designed to aid the transfer of forces across the finished joint.

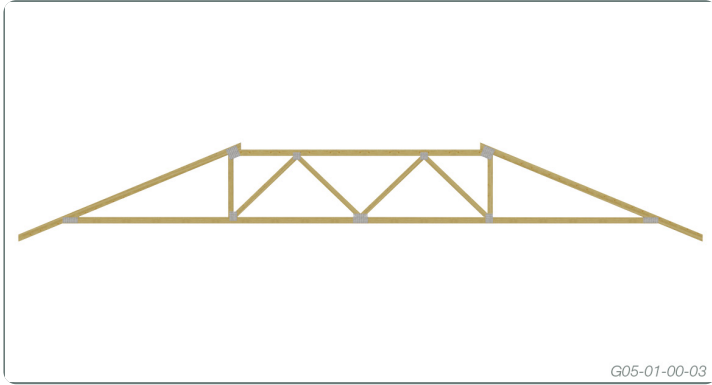
The nailplate is the ideal choice of fabricators for the joining of multiple timber members as they are designed to provide excellent holding power (with eight teeth per square inch) at a low cost per truss.

Nailplate have a uniquely-designed tooth shape that gives the nailplate full penetration and holding power

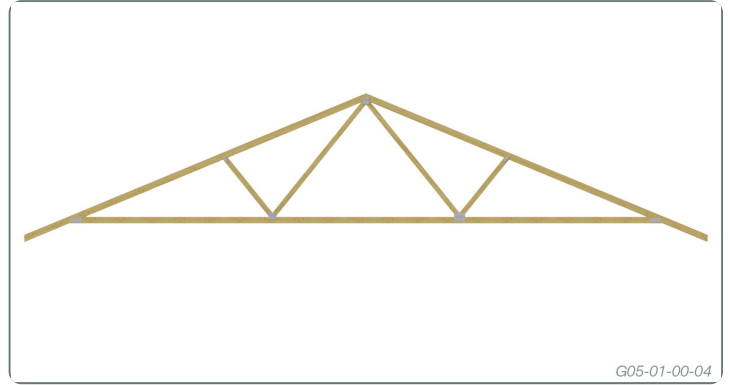
### TYPICAL APPLICATIONS

Nailplates are used in the manufacture of timber roof truss, floor trusses and butt jointed timber members like roof rafters and floor joists.

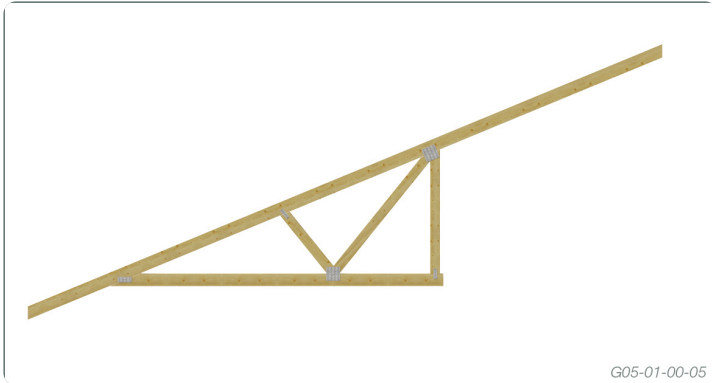
## Roof Trusses



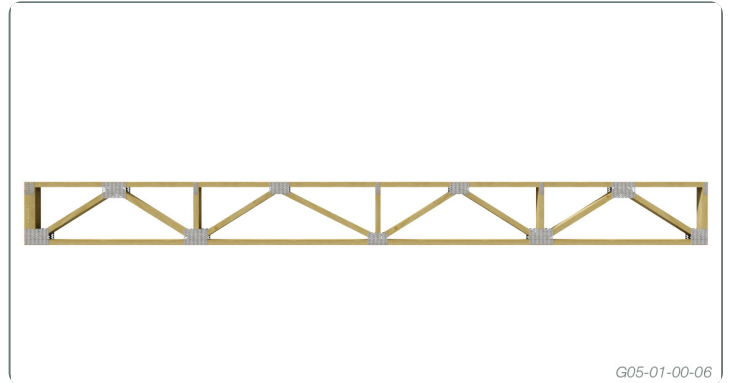
## Roof Trusses



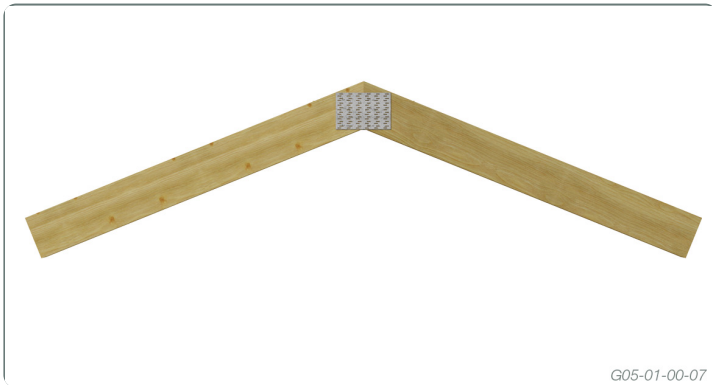
## Roof Trusses



## Floor Trusses



## Butt Joining



## Butt Joining



## FEATURES

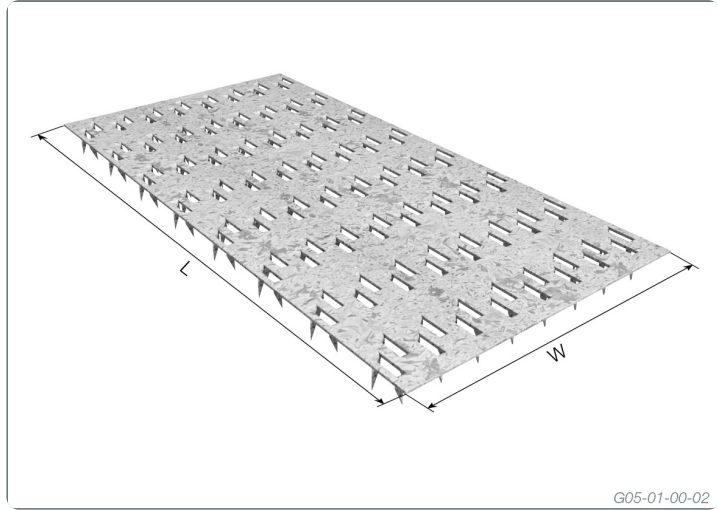
- Long teeth
- Low plate cost per truss
- Penetrates high density hardwoods
- Eliminates tooth bending and wood splitting
- High force transfer per unit area
- High holding power in hardwoods and softwoods
- Prime quality galvanised steel

## DESCRIPTION AND PACKAGING

Manufactured from 1.0mm Galvanised G300 Z275 Steel

Description	Product Code	Reference Code	Carton quantity	Carton kg.
W x L				
25 x 75 x 1.0	MN2575	MN025075	660	11.2
38 x 100 x 1.0	MN38100	MN038100	440	14.6
50 x 100 x 1.0	MN50100	MN050100	300	13.2
50 x 150 x 1.0	MN50150	MN050150	200	13.2
64 x 100 x 1.0	MN64100	MN064100	240	13.3
64 x 150 x 1.0	MN64150	MN064150	140	11.8
64 x 200 x 1.0	MN64200	MN064200	100	11.3
75 x 100 x 1.0	MN75100	MN075100	200	13.0
75 x 125 x 1.0	MN75125	MN075125	100	8.4
75 x 150 x 1.0	MN75150	MN075150	192	18.8
75 x 200 x 1.0	MN75200	MN075200	136	17.5
75 x 250 x 1.0	MN75250	MN075250	104	17.0
75 x 300 x 1.0	MN75300	MN075300	96	18.8
100 x 75 x 1.0	MN10075	MN100075	150	10.1
100 x 100 x 1.0	MN100100	MN100100	216	18.6
100 x 125 x 1.0	MN100125	MN100125	146	15.9
100 x 150 x 1.0	MN100150	MN100150	126	16.3
100 x 200 x 1.0	MN100200	MN100200	92	16.0
100 x 250 x 1.0	MN100250	MN100250	70	15.1
100 x 300 x 1.0	MN100300	MN100300	64	17.0
100 x 400 x 1.0	MN100400	MN100400	48	16.6
125 x 100 x 1.0	MN125100	MN125100	154	17.1
125 x 125 x 1.0	MN125125	MN125125	96	13.2
125 x 150 x 1.0	MN125150	MN125150	96	15.1
125 x 200 x 1.0	MN125200	MN125200	64	13.7
125 x 250 x 1.0	MN125250	MN125250	48	13.2
125 x 300 x 1.0	MN125300	MN125300	48	15.7
125 x 400 x 1.0	MN125400	MN125400	28	12.4
150 x 100 x 1.0	MN150100	MN150100	144	18.7
150 x 125 x 1.0	MN150125	MN150125	84	13.6
150 x 150 x 1.0	MN150150	MN150150	96	18.8
150 x 200 x 1.0	MN150200	MN150200	64	16.8
150 x 250 x 1.0	MN150250	MN150250	48	15.7
150 x 300 x 1.0	MN150300	MN150300	42	16.5
150 x 350 x 1.0	MN150350	MN150350	28	12.9
150 x 400 x 1.0	MN150400	MN150400	28	14.7
175 x 150 x 1.0	MN175150	MN175150	64	14.5
175 x 175 x 1.0	MN175175	MN175175	48	12.7
175 x 200 x 1.0	MN175200	MN175200	48	14.8

Description	Product Code	Reference Code	Carton quantity	Carton kg.
175 x 250 x 1.0	MN175250	MN175250	48	18.2
175 x 300 x 1.0	MN175300	MN175300	32	14.5
175 x 350 x 1.0	MN175350	MN175350	24	12.9
175 x 400 x 1.0	MN175400	MN175400	24	14.7
200 x 200 x 1.0	MN200200	MN200200	52	18.2



Due to continual product improvement Multinail Australia Pty Ltd. reserves the right to change the product/s depicted - both in description and specification. This document has to be read in conjunction with Multinail's Technical Manual.