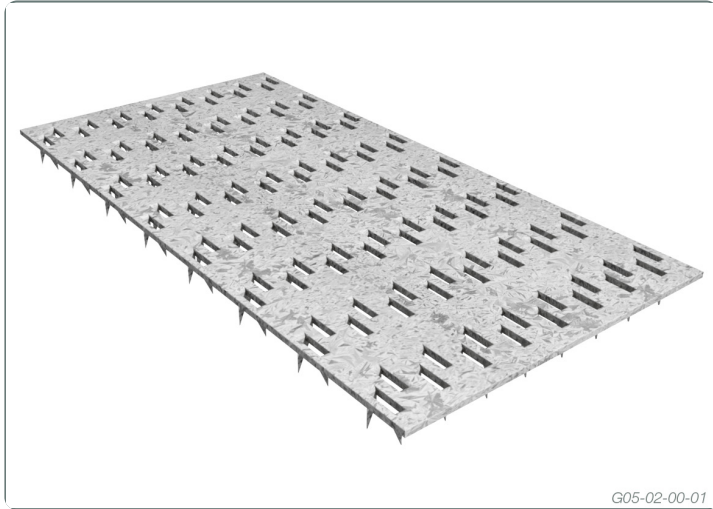


## MNH Truss Plate



Formed galvanised steel connector designed to provide an effective means of fastening two timber members together under high loads

**These formed galvanised steel connectors:**  
Incorporate preformed teeth making it quick and easy to press into timber.  
Teeth are spaced accordingly to eliminate timber splitting.  
Twisted tooth provide reduces tooth withdrawal.

### NAILPLATES

Multinail nailplates incorporate many refinements, particularly in the tooth profile and size, that is designed to grip the timber more securely. The bending and twisting of teeth during manufacture was carefully designed to aid the transfer of forces across the finished joint.

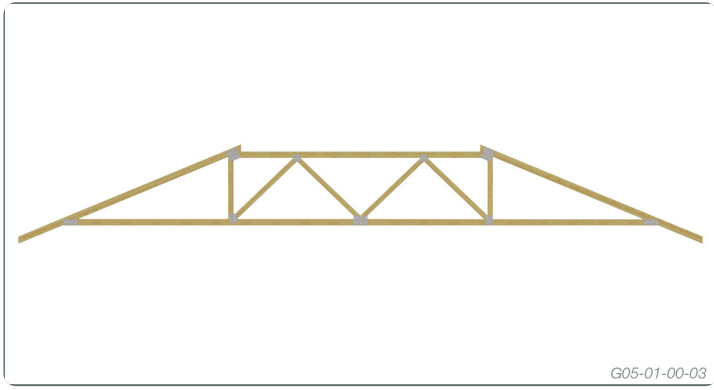
The nailplate is the ideal choice of fabricators for the joining of multiple timber members as they are designed to provide excellent holding power (with eight teeth per square inch) at a low cost per truss.

Nailplate have a uniquely-designed tooth shape that gives the nailplate full penetration and holding power.

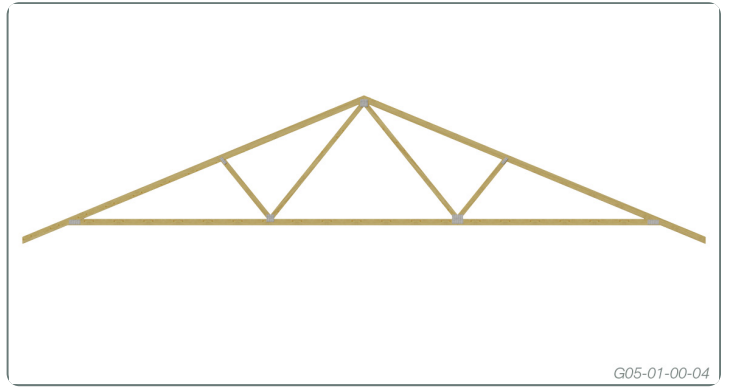
### TYPICAL APPLICATIONS

Nailplates are used in the manufacture of timber roof truss, floor trusses and butt jointed timber members like roof rafters and floor joists.

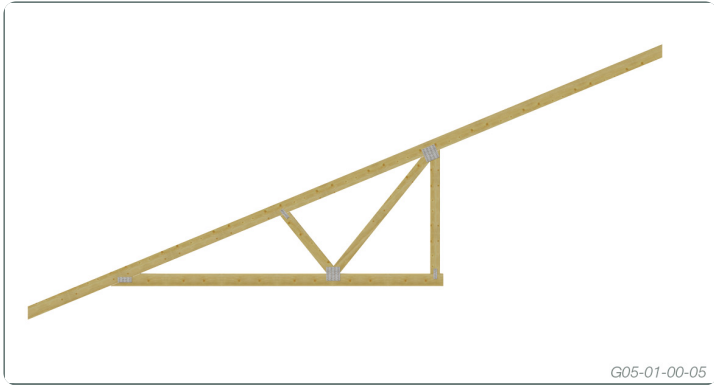
### Roof Trusses



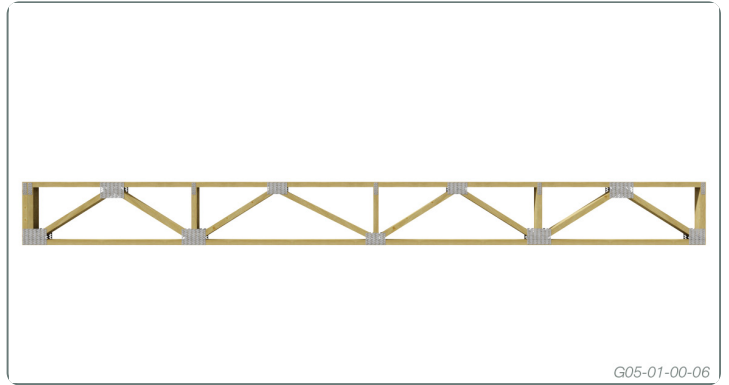
### Roof Trusses



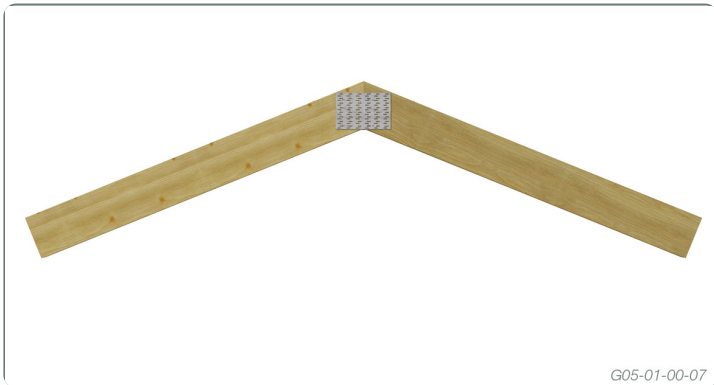
### Roof Trusses



### Floor Trusses



### Butt Joining



### Butt Joining



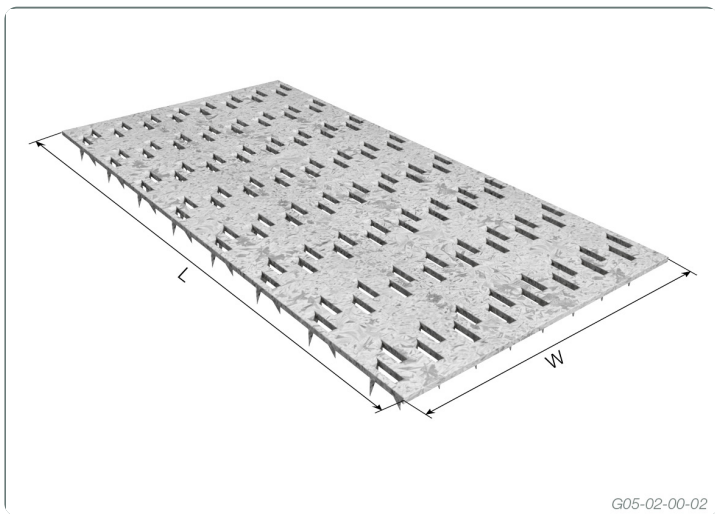
## FEATURES

- Long teeth
- Low plate cost per truss
- Penetrates high density hardwoods
- Eliminates tooth bending and wood splitting
- High force transfer per unit area
- High holding power in hardwoods and softwoods
- Prime quality galvanised steel

DESCRIPTION AND PACKAGING

Manufactured from 1.5mm Galvanised G300 Z275 Steel

Description	Product Code	Reference Code	Carton quantity	Carton kg.
W x L				
64 x 150 x 1.5	MNH64150	MNH064150	140	17.0
64 x 200 x 1.5	MNH64200	MNH064200	100	16.1
64 x 300 x 1.5	MNH64300	MNH064300	84	20.2
75 x 150 x 1.5	MNH75150	MNH075150	144	20.7
75 x 200 x 1.5	MNH75200	MNH075200	104	20.1
75 x 300 x 1.5	MNH75300	MNH075300	72	20.8
100 x 150 x 1.5	MNH100150	MNH100150	108	20.7
100 x 200 x 1.5	MNH100200	MNH100200	80	20.4
100 x 250 x 1.5	MNH100250	MNH100250	60	19.1
100 x 300 x 1.5	MNH100300	MNH100300	48	18.5
100 x 400 x 1.5	MNH100400	MNH100400	36	18.6
125 x 150 x 1.5	MNH125150	MNH125150	84	19.5
125 x 200 x 1.5	MNH125200	MNH125200	56	17.9
125 x 300 x 1.5	MNH125300	MNH125300	42	19.9
125 x 400 x 1.5	MNH125400	MNH125400	28	17.9
150 x 150 x 1.5	MNH150150	MNH150150	60	17.3
150 x 200 x 1.5	MNH150200	MNH150200	48	18.9
150 x 300 x 1.5	MNH150300	MNH150300	36	20.8
150 x 400 x 1.5	MNH150400	MNH150400	24	18.4
175 x 200 x 1.5	MNH175200	MNH175200	28	12.7
175 x 300 x 1.5	MNH175300	MNH175300	28	18.7
175 x 400 x 1.5	MNH175400	MNH175400	20	18.0



Due to continual product improvement Multinail Australia Pty Ltd. reserves the right to change the product/s depicted - both in description and specification. This document has to be read in conjunction with Multinail's Technical Manual.